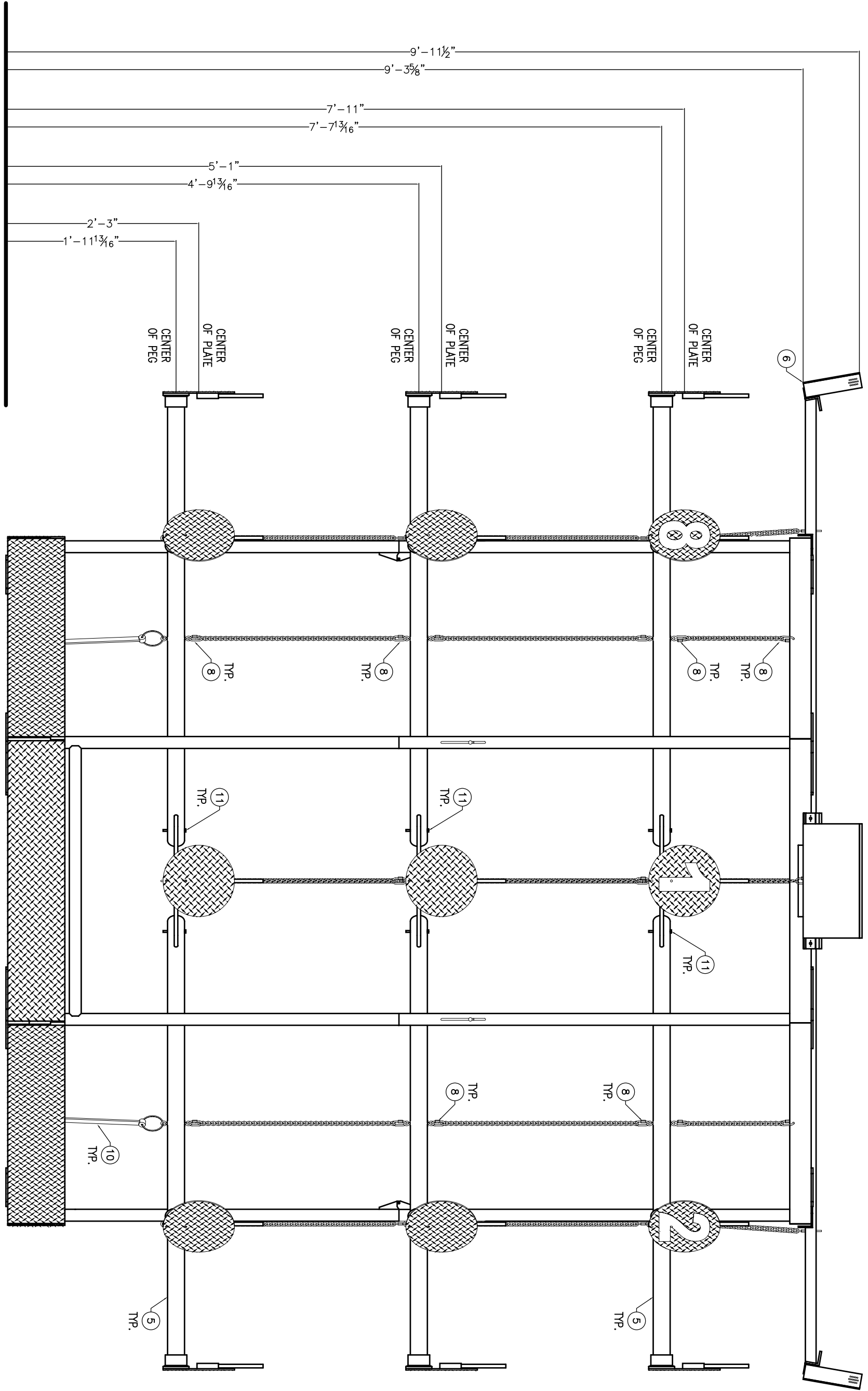
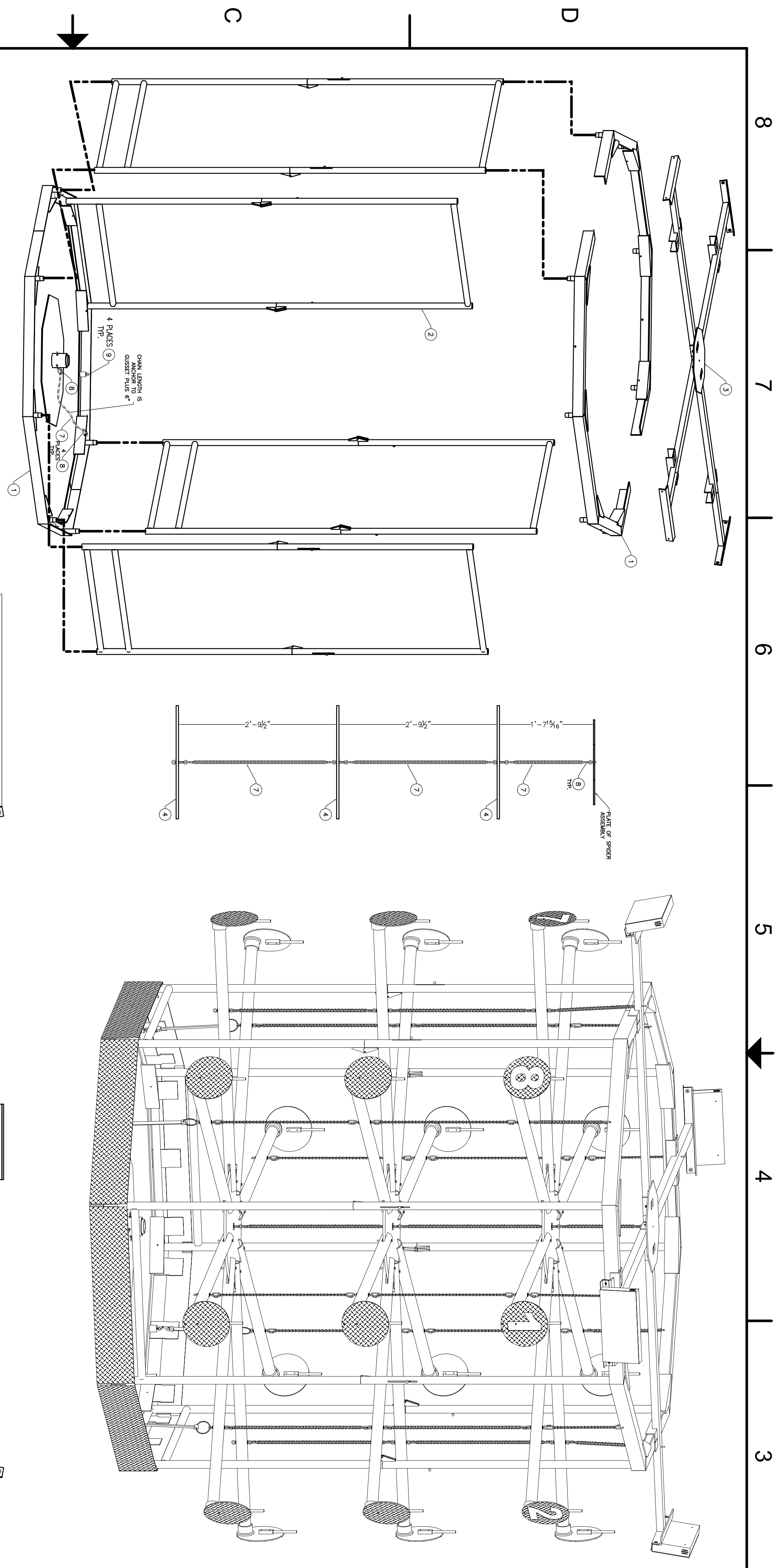


ZONE	REV	DESCRIPTION	DATE	APPROVED

ITEM	QTY.	DESCRIPTION	REMARK	PART NO.
1	4	TOP BOTTOM FRAME	-	G07-0002-W3
2	4	SIDE FRAME	-	G07-0002-W4
3	1	SPIDER ASSEMBLY	-	G07-0003-AS1
4	3	PEG MOUNTING PLATE ASSEMBLY	-	G07-0003-AS5
5	24	PEG ASSEMBLY	-	G07-0003-AS6
6	4	2007 VISION TARGET ASSEMBLY	-	F02-0202
7	70	CHAIN, 2.0 TWIST LINK MACHINE, BLU-RHOME	-	0322014
8	62	CHAIN CONNECTOR, QUICK LINK	McMaster	8947715
9	4	EYE BOLT, 1/2-20x1" THREAD	McMaster	9489117
10	4	RUBBER TIEDOWN ASSEMBLY	-	G07-0003-AS8
11	16	BOLT, 1/2-20x3 1/2"	-	-



REV. DATES FROM SPECIFIED		BY	DATE
TOLERANCE: PARALLEL		TITLE	
FRAC. 1/4, 1/8, 1/16, 3/32 OR STRAIGHT *		2007 FIELD RACK ASSEMBLY	
0.005, .001 CONCENTRIC T.I.R.		DESIGNED BY	DATE
.001, .002 HOLS. .001, .002		JR202	11/21/06
.001, .001 FINISH		SIZE	CHECKED
.001, .001 FINISH		D	NO. 607-0004

**FIRST**  
 200 Bedford Street, Manchester, N.H. 03101  
 (603) 666-3906 • FAX (603) 666-3907

