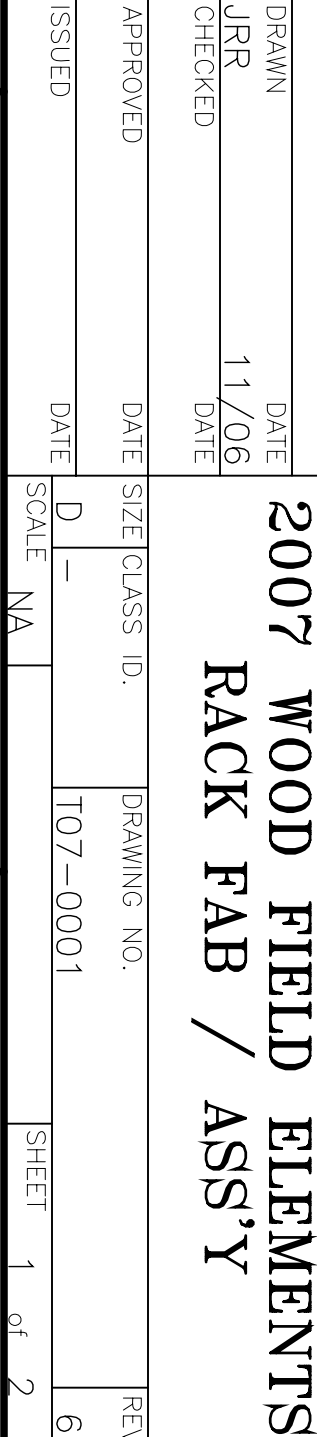
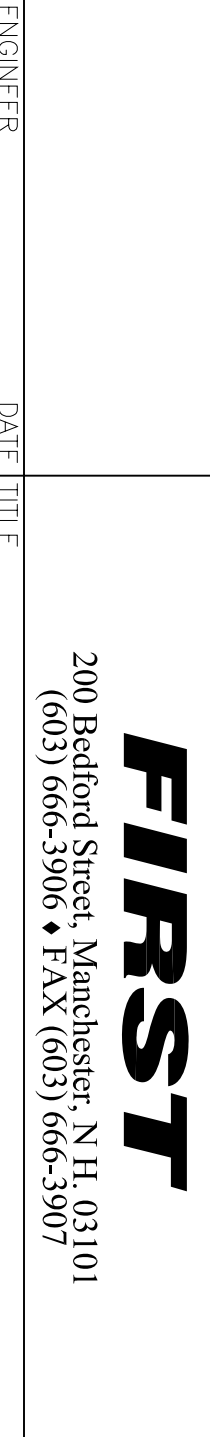
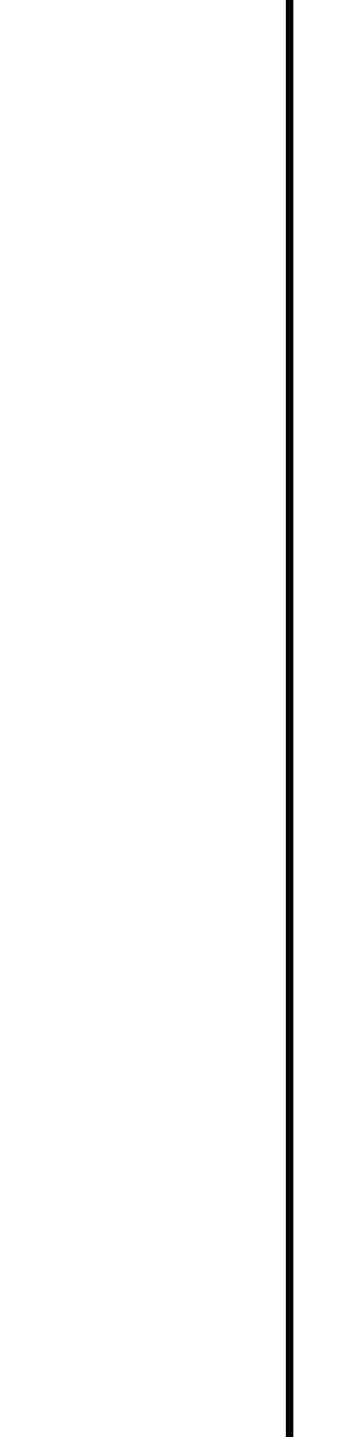
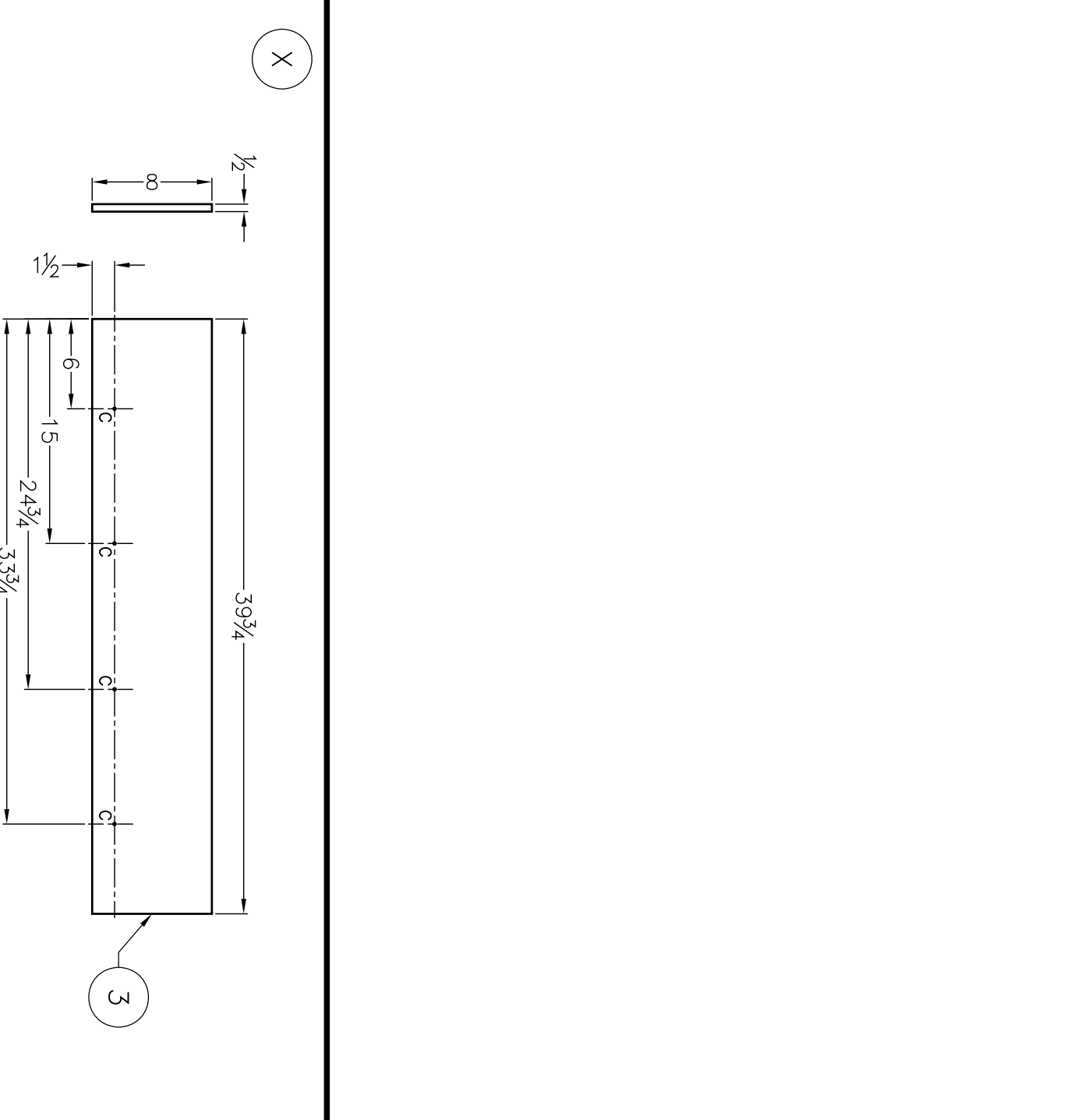
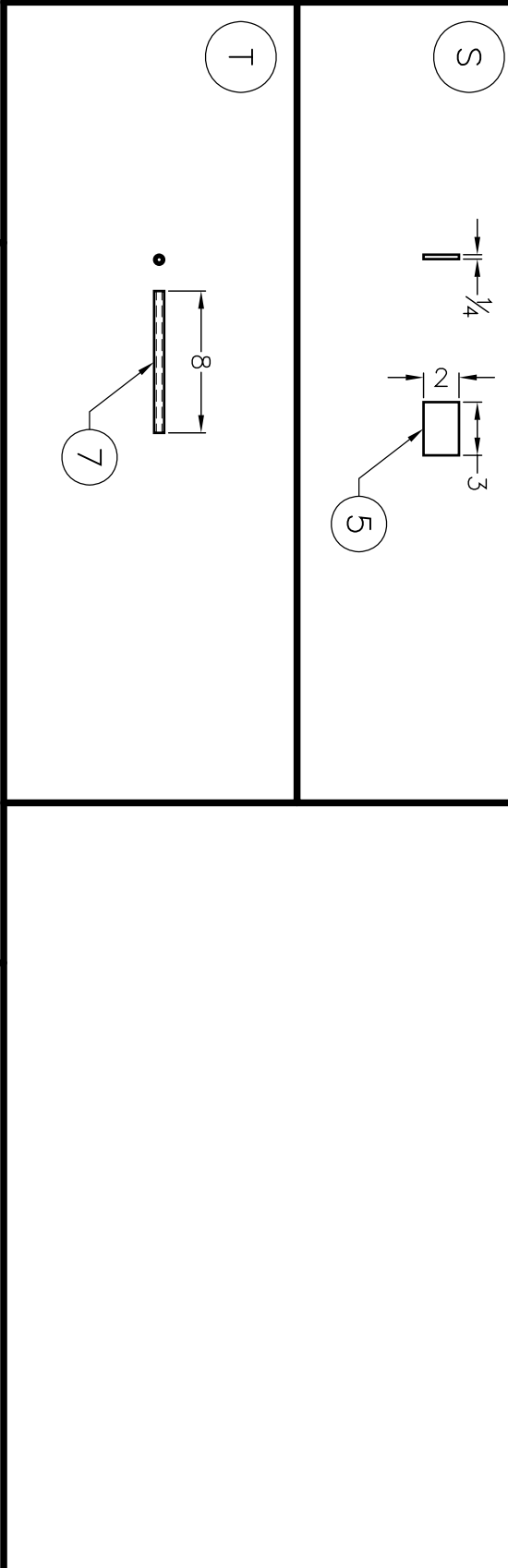
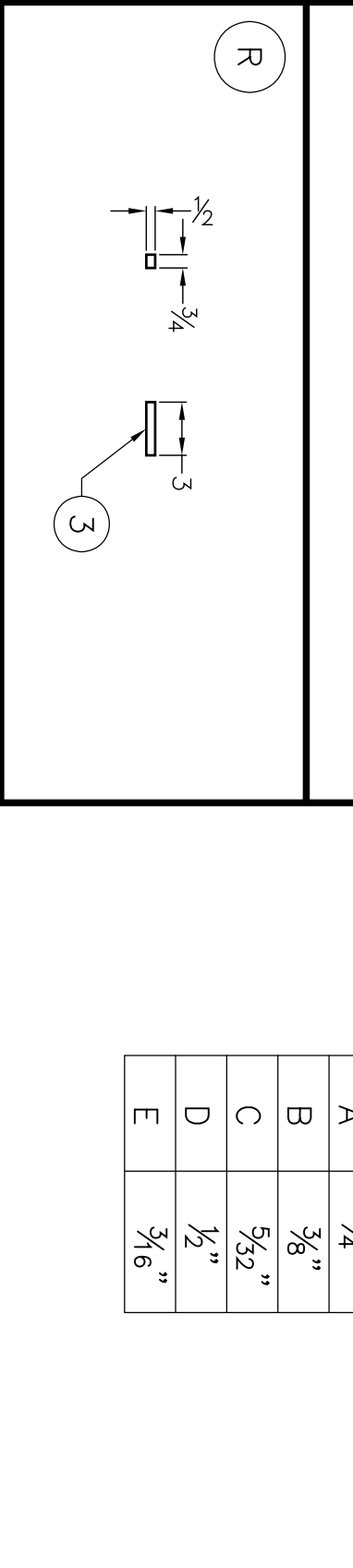
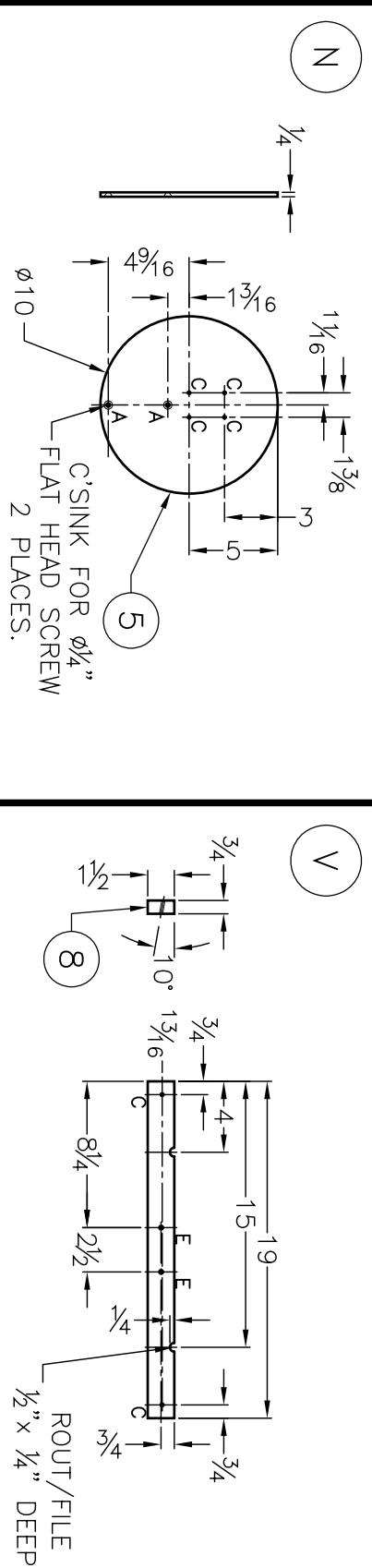


ZONE	REV	DESCRIPTION	DATE	APPROVED
1		CHANGED DESCRIPTION ADDED PART NUMBER TO ITEM 6	12/09/08	
2		ADDED PART NUMBER TO PART 6	12/09/08	
3		ADDED PART NUMBER TO PART 6	12/09/08	
4		ADDED VERTICAL DIMENSION TO PART X	12/11/08	
5		CHANGED PART NUMBER TO PART X	12/11/08	
6		CHANGED PARTS LIST ITEM 8 DESCRIPTION FM 2"x 5" TO 1"x 2"	12/18/08	
		ADDED NOTE TO PART F	12/18/08	
		ADDED NOTE TO PART Y	12/29/08	
		ADDED HOLE PLACEMENT ON PART X	12/29/08	

ITEM	QTY.	DESCRIPTION	LENGTH	REMARKS
1	AR	2"x4" SPF LUMBER	-	
2	AR	4"x8 x 3/4" PLYWOOD	-	
3	AR	1/2" PLYWOOD	-	
4	AR	2" SCH-40 PVC ELECTRICAL CONDUIT	-	
5	AR	1/2" PLYWOOD	-	
6	AR	OATEY PVC GENERAL PURPOSE DRAIN	4.3579	
7	AR	5/8" ID SAE J3087 FUEL HOSE	65.127	
8	AR	1"x 2" PINE BOARD	-	



HOLE CHART	
HOLE	SIZE
A	1/4"
B	3/8"
C	5/32"
D	1/2"
E	3/4"



FIRST
 200 Bedford Street, Manchester, N.H. 03101
 (603) 666-3906 • FAX (603) 666-3907

2007 WOOD FIELD ELEMENTS RACK FAB / ASS'Y

ENGINEER _____ DATE _____
 DRAWN _____ DATE 11/06
 CHECKED _____ DATE _____
 APPROVED _____ DATE _____
 ISSUED _____ DATE _____

DRAWING NO. TO7-0001
 SCALE NA
 SHEET 1 of 2