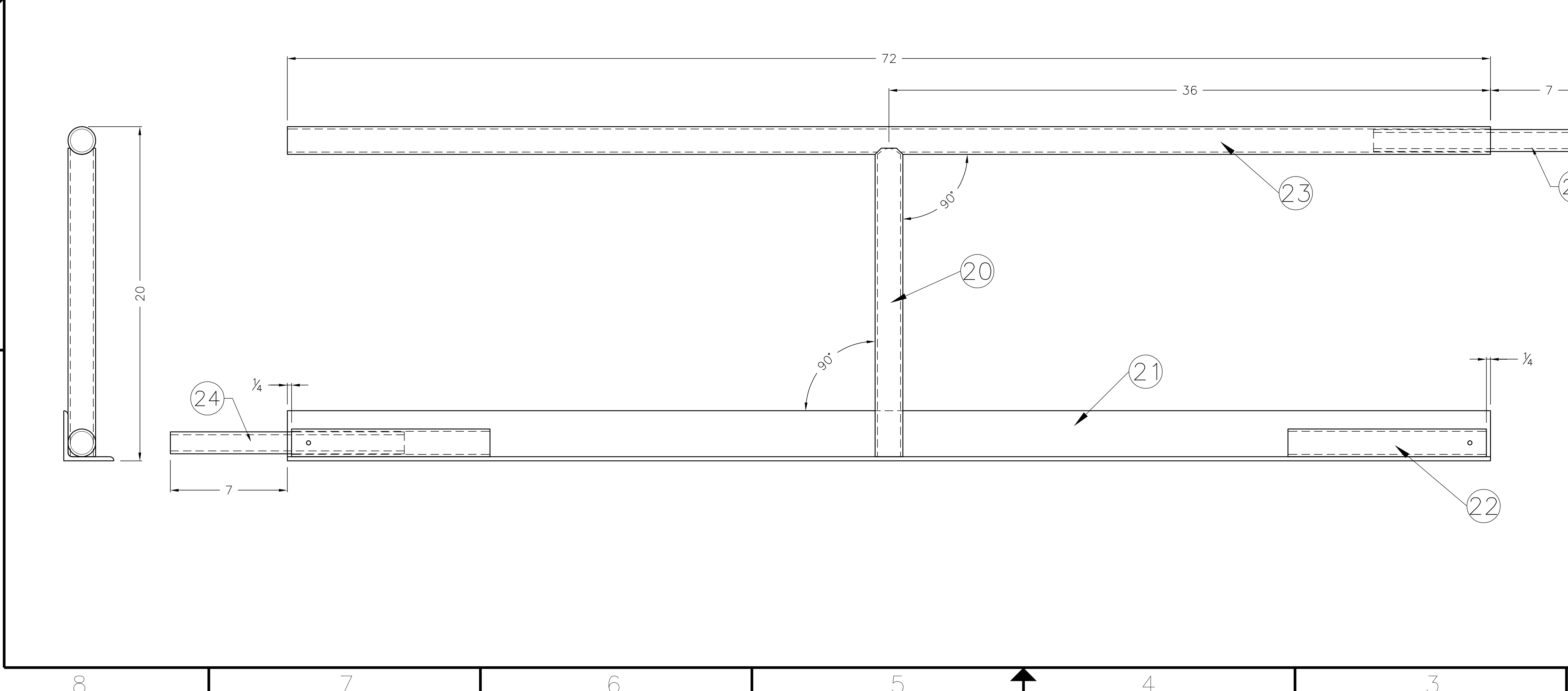


REVISIONS				
ZONE	REV	DESCRIPTION	DATE	APPROVED
1	PER MARK-UPS		5/30/06	--

ITEM	QTY.	DESCRIPTION	LENGTH	PART NO.
1	1	3"x3"x1/4" 6061-16 ALUM.	-	-
2	2	1 1/2" SCH. 40 STR.PIPE 6061-16 ALUM.	-	-
3	1	1" SCH. 40 STR.PIPE 6061-16 ALUM.	-	-
20	.	VERTICAL SUPPORT	-	F05-0007-20
21	.	BOTTOM RAIL	-	F05-0007-21
22	.	CONNECTING TUBE	-	F05-0007-22
23	.	TOP RAIL	-	F05-0007-23
24	.	MATING PIN	-	F05-0007-24



NOTE:
REMOVE ALL SHARP EDGES.

1 PER MARK-UPS		JR	5/06	FIRST	
REV.	FROM	BY	DATE	200 Bedford Street, Manchester, N.H. 03101 (603) 666-3906 • FAX (603) 666-3907	
UNLESS OTHERWISE SPECIFIED				TITLE	
TOLERANCE PERPENDICULAR WITHIN				FIELD, RAIL FABRICATION AND ASSEMBLY	
FRAC. 1/64				MATERIAL AS NOTED	
PARALLEL				DRAWN BY	
FLAT OR STRAIGHT				DATE	
CONCENTRIC T.I.R.				SCALE	
.001/-.015				CHECKED	
RADIOI : %				DATE	
HOLEI : %				SIZE	
FSCM				No. F05-0007	
				SHEET NO. 1	