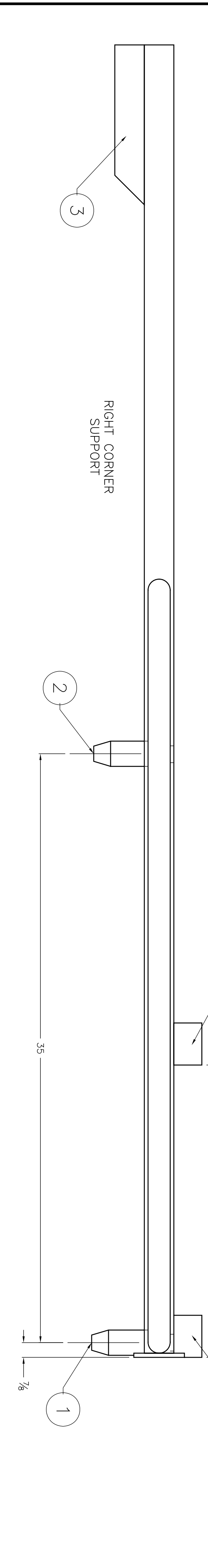
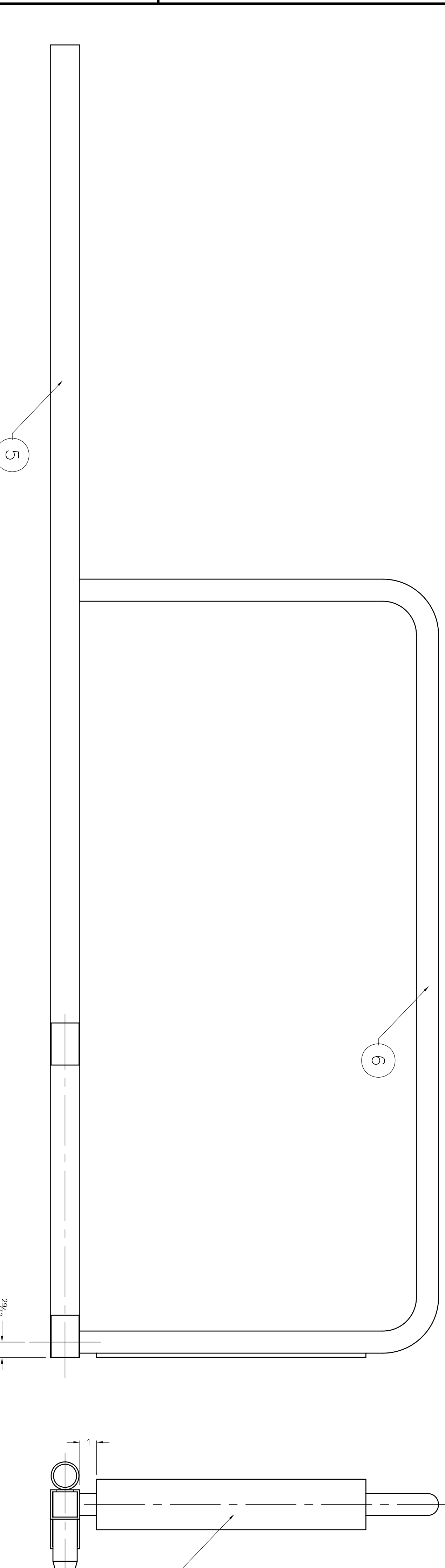
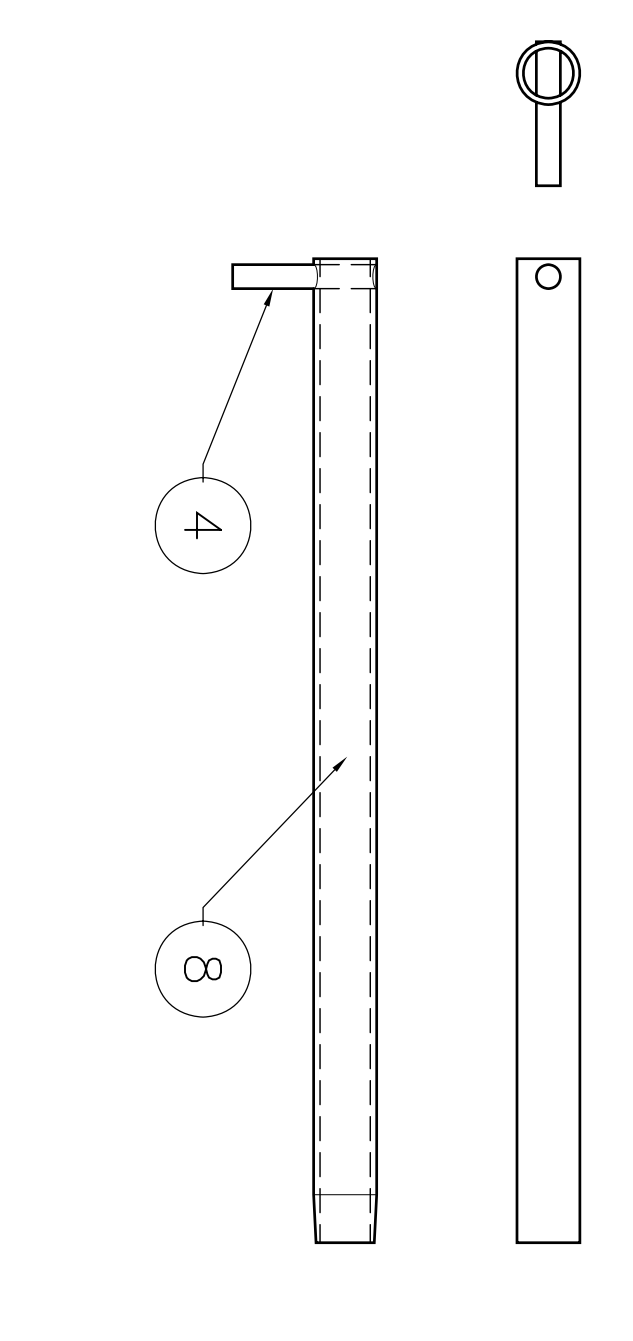
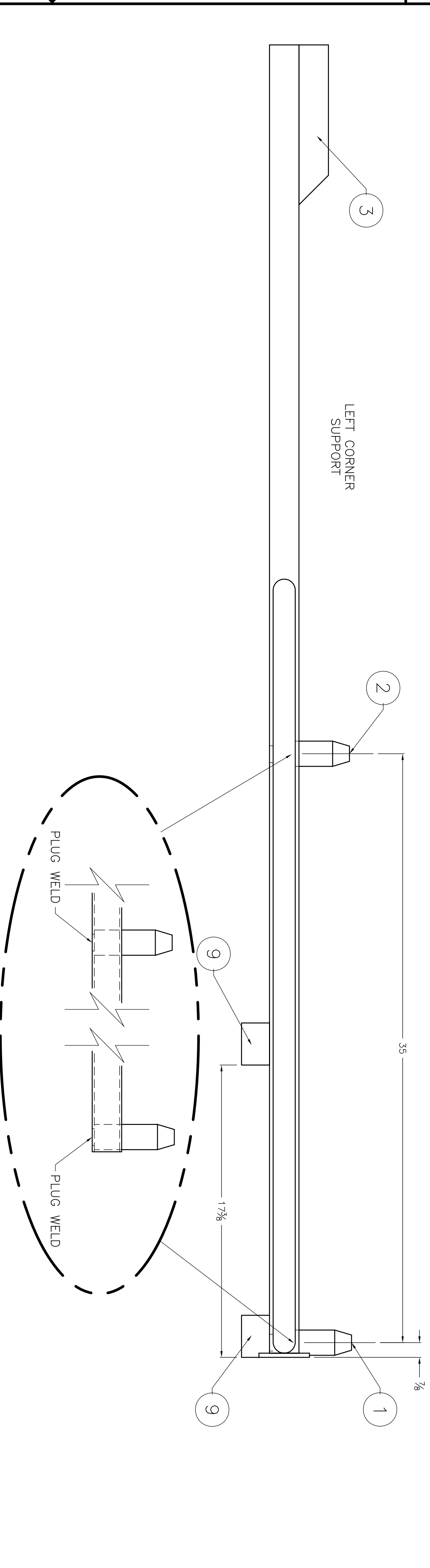


ZONE	REV	DESCRIPTION	DATE	APPROVED
2		FOR LITERATURE	6/20/06	---
3		RIGHT SUPPORT DETAIL	10/02/06	---
4		CHANGED AS NOTE & SUPPORT DETAIL	12/04/06	---
5		CORRECTED AS NOTE & SUPPORT DETAILS FOR PIN / PLUG WELD	12/04/06	---



ITEM	QTY.	DESCRIPTION	LENGTH	PART NO.
1	1	CONNECTOR SHAFT 'A'	.	F05-0005-01
2	1	CONNECTOR SHAFT 'B'	.	F05-0005-02
3	1	CONNECTOR TUBE	.	F05-0005-03
4	1	PULL ROD	.	F05-0005-04
5	1	SUPPORT COLUMN	.	F05-0005-05
6	1	SUPPORT RAIL	.	F05-0005-06
7	1	STOP PLATE	.	F05-0005-07
8	1	RAIL PIN	.	F05-0005-08
9	2	MOUNTING COUPLER	.	F05-0005-09



NOTE:
 1. LEFT CORNER SUPPORT SHOWN, RIGHT CORNER SUPPORT IS OPPOSITE.
 2. REMOVE ALL SHARP EDGES.

NO.	DATE	BY	DESCRIPTION
5	12/06	JR	CHG. NOTE & DETAIL
4	10/06	JR	CHG. NOTE & DETAIL
3	9/06	JR	CHG. NOTE & DETAIL
2	6/06	JR	FOR LITERATURE
1			FROM

TOLERANCE: PERPENDICULAR WITHIN .001 IN. UNLESS OTHERWISE SPECIFIED

FINISH: SURFACE FINISH

SCALE: 1-4

CHECKED: DATE

SHEET NO. 1

FIRST
 200 Bedford Street, Manchester, N.H. 03101
 (603) 666-3906 • FAX (603) 666-3907